

DiskXtender™ Appliance Edition Software

Infinite Storage for Enterprise Data

Large companies are experiencing an explosion in the demand for storage capacity, driven in part by applications such as e-mail, Customer Relationship Management, e-commerce, and the increased use of multimedia formats. Meeting data storage requirements is one aspect of this problem, but managing the data intelligently, growing your storage infrastructure cost-effectively and providing end users with immediate access to this crucial asset are the underlying challenges.

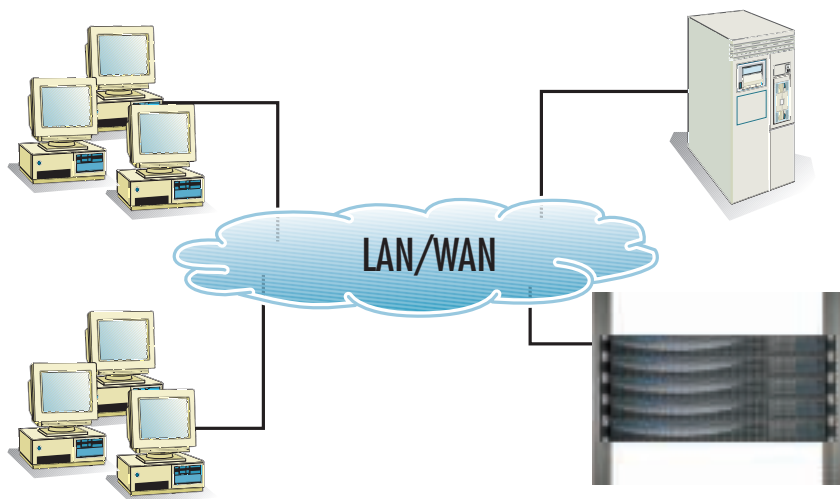
DiskXtender Appliance Edition Offers an Efficient Solution

DiskXtender™ Appliance Edition (DX AE) provides a simple, cost-effective solution for managing the complexities of data storage management seamlessly with Snap Server products. Using automated policy-based data management, DX AE turns a Snap Server into a storage management appliance that consolidates and centralizes distributed network data into a virtual storage pool. As storage requirements increase, additional Snap Servers can be transparently added to the storage configuration.

DX AE aggregates multiple Snap Servers to provide a virtualized logical view of all stored data within the Snap Server pool—regardless of its physical location—through a common data management interface. In addition to leveraging existing storage assets and reducing complexities, DX AE enables administrators to increase their storage capacity infinitely and without limitation in an intelligent, cost-effective manner—thereby lowering the total cost of ownership of mission-critical data. DX AE is easy to install, enabling fast deployment with minimal IT intervention.

DX AE Software Key Features

- Aggregates Multiple Snap Servers Into One Virtual Storage Pool
- Automated Data Migration Tool
- Immediate and Seamless Access to Migrated Data
- Simple and Fast Installation via Setup Wizard
- Easy Implementation Requires Minimal IT Intervention



DiskXtender Appliance Edition (DX AE), running on your existing Windows NT and Windows 2000 servers, uses automated management policies to consolidate Snap Server storage into aggregated pools, allowing network clients to transparently access their data, regardless of location.

Today's IT Reality and Challenges	DX AE Solves Business Problems
Storage Consolidation for Improved Utilization	
<p>Islands of distributed data storage:</p> <ul style="list-style-type: none">✗ Cannot be dynamically allocated and shared among multiple applications✗ Difficult to manage	<ul style="list-style-type: none">• Consolidates data across multiple network servers into virtual storage pool to provide dynamic storage allocation for the applications and users who need it the most• Provides a logical view of stored data to applications and users, regardless of its physical location
<ul style="list-style-type: none">✗ Manual data transfer, tracking and management	<ul style="list-style-type: none">• Manages data storage in an automated, intelligent manner—reducing manual management overhead and providing lower total cost of ownership
<ul style="list-style-type: none">✗ Server overload reduces applications efficiency and risk of costly downtime	<ul style="list-style-type: none">• Data is automatically migrated to Snap Servers, freeing up overloaded servers for application use
Snap Server Aggregation for Cost-Effective, Scalable Growth	
<ul style="list-style-type: none">✗ Companies are generating more and more data, with no end to growth in sight	<ul style="list-style-type: none">• As storage requirements increase, simply add Snap Servers. DX AE aggregates distributed Snap Servers into the virtual storage pool—with no need to bring network servers down to add more storage
Storage Virtualization for Transparent Access	
<ul style="list-style-type: none">✗ End users' demand for timely access to stored data	<ul style="list-style-type: none">• Provides end users immediate and transparent access to all their stored data without administrator intervention
Administrative Benefits	
<ul style="list-style-type: none">• Seamlessly integrates into an organization's current environment; no interruption to end users• Easy implementation keeps administrative costs down• Leverages existing IT storage investment	

System Requirements

- Windows 2000 Service Pack 1 or Windows NT 4.0, Service Pack 6a
- Pentium 450MHz or higher
- Minimum 256 MB RAM
- NTFS hard drive (size depends on application requirements)
- One or more Snap Server 12000 or Snap Server 4100 units (maximum of five)

For more information contact:

Unylogix Technologies Inc

Tel: (514) 253-5200

email: info@unylogix.com

web: www.unylogix.com

Specifications subject to change without notice.

© 2001 Quantum Corporation. All rights reserved. Quantum, the Quantum logo, Network Storage Made Simple, and Snap Server are trademarks of Quantum Corporation registered in the U.S.A. and other countries. Products mentioned herein are for identification purposes only and may be registered trademarks or trademarks of their respective companies. All other brand names or trademarks are the property of their respective owners.

Printed in the U.S.A. DiskXtender AE Datasheet/111501 1.5K